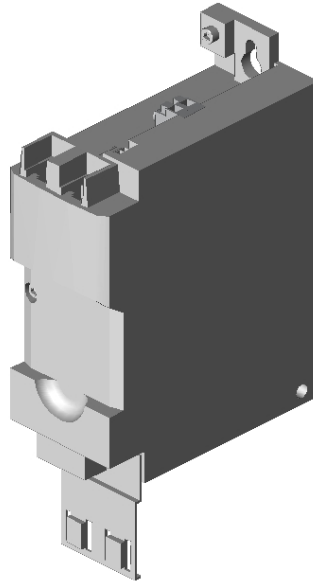
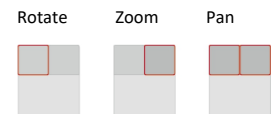


i550 Frequency inverter**I55AE137B10V1000KS**

Note: The model shown is a simplified representation. Minor deviations may occur.

16482620_3D.stp
16482620_datatable.csv
16482620_datatable.xls

3D Handling Commands

**Technical product information****i550 Frequency inverter****Inverter**

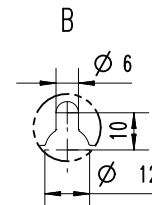
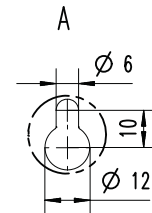
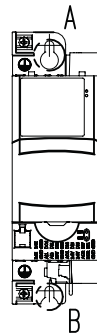
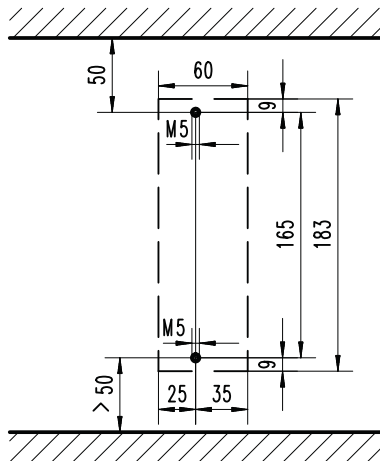
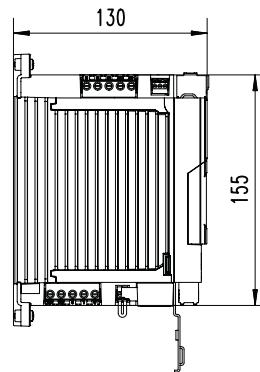
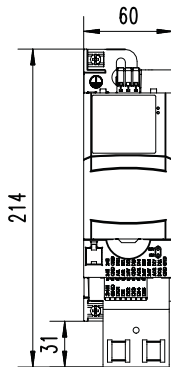
Type	i550-C0.37/230-1 I55AE137B10V1000KS
Rated power	0.37 kW/0.5 HP
Rated mains voltage	1/N/PE 230/240 V AC
Output current	2.4 A
RFI filter	Integrated
Output frequency	0-599 Hz
I/O extension	Standard I/O
Fieldbus network	EtherCAT
Enclosure	IP20
Mounting location	Control cabinet
Weight / unit	0.968 KG

0.25 kW ... 0.37 kW

The dimensions in mm apply to:

0.25 kW	I55AE125B	I55AE125D	
0.37 kW	I55AE137B	I55AE137D	I55AE137F
Weight	0.8 kg	0.8 kg	0.8 kg

Note: The specified installation clearances are minimum dimensions to ensure a sufficient air circulation for cooling purposes. They do not consider the bend radiuses of the connecting cables.



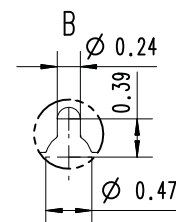
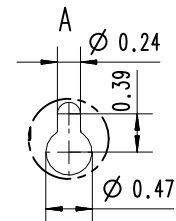
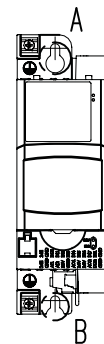
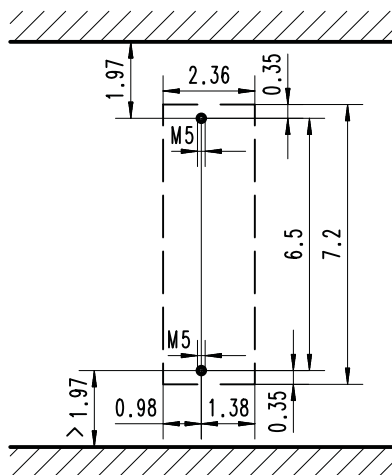
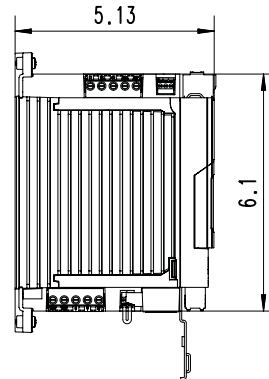
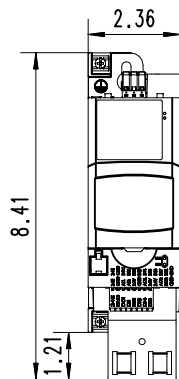
8800263

0.33 hp ... 0.5 hp

The dimensions in inch apply to:

0.33 hp	I55AE125B	I55AE125D	
0.5 hp	I55AE137B	I55AE137D	I55AE137F
Weight	1.8 lb	1.8 lb	1.8 lb

Note: The specified installation clearances are minimum dimensions to ensure a sufficient air circulation for cooling purposes. They do not consider the bend radiuses of the connecting cables.



8800298